

Total Population, 2005	71,623
Total Households, 2005	27,334
Median Age, 2005	38.2

Educational Attainment, 2003

Less than High School	12,993
High School	14,559
Associates Degree	9,677
Some College	2,555
Bachelor's Degree	4,308
Graduate Degree	1,511
SAT score, county average	1009
SAT score, state average	1010

Income, 2005

Median Household Income	\$46,326
Per Capita Income	\$21,672

Employment by Industry, 2005

Agriculture, Mining	79
Construction	1,601
FIRE	525
Manufacturing	6,233
Public Administration	1,005
Retail Trade	2,320
Wholesale Trade	429
Information	175
Professional	363
Management	32
Administrative Services	394
Educational	1,572
Health Care	1,756
Arts, Entertainment, Recreation	222
Accommodation and Food	1,544
Other Services	534
Transportation, Warehousing	715

Labor Force, 2005

Population	36,077
Unemployment Rate	5.7%

Lincoln County is a place where things are still made. Where skilled workers know how to use their hands as well as their heads. Where business, industry and distribution exist comfortably side by side with quality small town, country and lakeside living. Where traffic doesn't roar by but interstates are just down the road. Where big city amenities are nearby but urban sprawl doesn't yet intrude.

Lincoln County provides the perfect environment for business. The county boasts a highly responsive infrastructure. From a strong business retention and expansion program to an extensive selection of prime business parks, up to 600 acres, and free-standing locations, Lincoln County is the perfect locality for all types of business.

Because of Lincoln County's superior business climate, the county is rapidly being recognized as a manufacturing and distribution hub with a growing automotive sector. Companies are taking advantage of Lincoln County's low tax rate, available skilled labor, commitment to learning and no labor unions. Along with Lincoln County's high quality of life, the county has become attractive to a diversity of international and domestic companies.



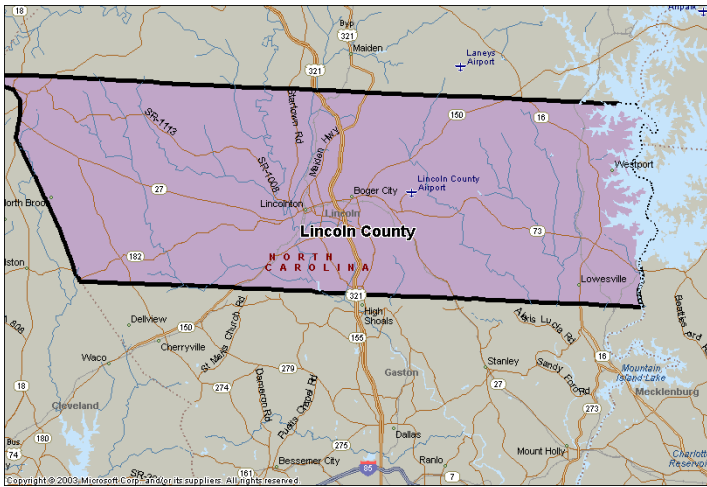
From location to quality of life, Lincoln County, North Carolina is the perfect place for living and the perfect place for working.

Contact Information

Barry Matherly
 Lincoln County Economic Development Corp.
 Post Office Box 2050
 Lincolnton, NC 28093
 704.732.1511
www.lincolnceda.org leda@vnet.net

Major Employers

<u>Company</u>	<u>Major Product</u>	<u># Employees</u>
RSI Home Products, Inc.	Vanities & culture marble counter tops, cabinets, etc	988
The Timken Company	Tapered roller bearings & package bearing wheel assembly	790
Robert Bosch Tool Corporation	Hand tools & power tool accessories	512
Blum, Inc.	Cabinet & furniture hardware	410
Cochrane Furniture	Furniture (bedroom, dining & upholstery)	400
R-Anell Custom Homes Inc.	Mfg. housing, modular & commercial	353
Mohican Mills	Tricot, circular and lace knit products	350
La-Z-Boy Inc.	Upholstered recliners & incline groups	320



Average Weekly Wage	2005
Agriculture, Forestry, Fishing	\$394
Utilities	\$983
Construction	\$591
Manufacturing	\$661
Wholesale Trade	\$811
Retail Trade	\$432
Transportation & Warehousing	\$616
Information	\$593
Finance & Insurance	\$671
Real Estate & Rental & Leasing	\$562
Professional & Technical Services	\$695
Management of Companies & Enterprises	\$778
Administrative & Waste Services	\$506
Educational Services	\$645
Health Care & Social Assistance	\$597
Accommodation & Food Services	\$213
Public Administration	\$556
Average Weekly Wage	\$567

Announced Jobs & Investments

Jobs announced, 2005	430
Total investment announced, 2005	\$101,115,000

Accessibility

Nearest Major City	Charlotte
Distance to Nearest Major City (miles)	35 miles
Nearest Commercial Airport	Douglas International
Runway Length	10,000 ft.
Distance to Nearest Airport	30 miles
Nearest Interstate	I-85
Distance to Nearest Interstate (miles)	17 miles
Nearest Deepwater Port	Port of Charleston
Distance to Nearest Deepwater Port	242 miles
Foreign Trade Zone Accessibility	Yes
Population within 50 mile radius, 2003	2,406,823

Development Capacity

Wastewater Treatment Capacity Available	Yes
Natural Gas Available	Yes

Taxes, Sales & Services

Property Taxes/\$100 value	\$0.6100
Taxable Sales (Mil \$, Oct 05)	\$35.7
Taxable Sales (Mil. \$, FY 04-05)	\$720.7
Number of Physicians, 2003	57
Population/Physician ratio, 2004	1,204
Population/RN ratio, 2004	253
Population/Dentist ratio, 2004	4,037

Source: ESRI Estimates/Projections, 2006

Unemployment Insurance

New Employers (per \$100)	1.2%
Deficit Employers (max rate)	5.7%
Minimum Tax Rate	0.0%
Average Tax Rate	0.4%
Taxable Base	\$15,900

Inventory Tax

Finished Goods	none
Raw Materials	none
Goods in Process	none
Mat'l consumed in Mfg.	none

Sales Tax, General

State	4.5%
Local	2.5%

Sales Tax, Special Provisions

Electricity	3.0%
Natural Gas	3.0%
Manufacturing Fuels	1.0%
Manufacturing Equipment	1.0%
Telecommunications Service (intrastate)	6.0%

Education

Public Schools	22
Private Schools	3
School Districts	1
Colleges & Universities	1
Public Libraries	4

Climate

Annual Average Temp.	61F
Annual Average High Temp.	71F
Annual Average Low Temp.	51F